

AX M-54 3.2

premium sol

*Photovoltaic modules from German manufacturer -
developed and manufactured with
German quality demand*

**reliable . powerful . attractive
passionate . honest . empathic**

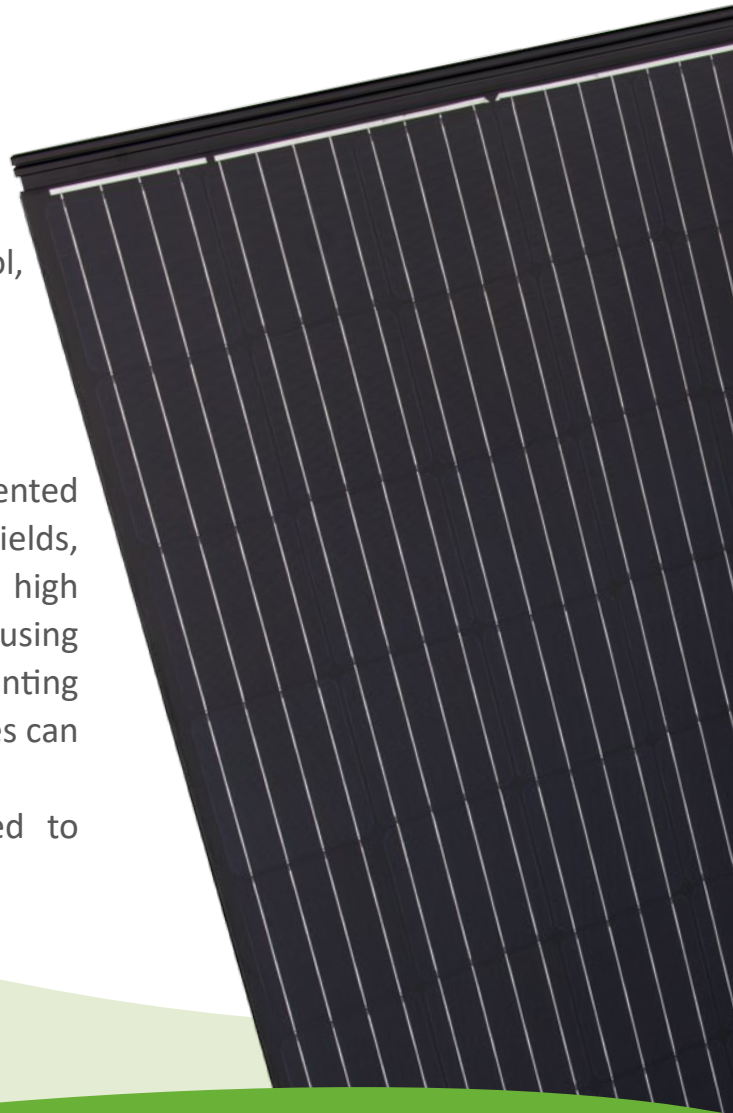
BIPV

monocrystalline solar module AX M-54 premium sol,
developed for the perfect building integration

SOLRIF®

Solrif has become the market leader with their patented BIPV-System and is well-established due to high yields, functional aesthetics and simple installation. A high efficiency solar roof tile has been developed using PV laminates from AxSun and the Solrif BIPV mounting system from Schweizer. Thus, conventional roof tiles can be totally replaced on a pitched roof.

Our BIPV-System is a real integration compared to roof-mounted PV systems.



- ▶ 15 year product guarantee on products with tempered safety solar glass
- ▶ 12 year product guarantee on premium products with ARC tempered safety solar glass (anti-reflection coating)
- ▶ 25 year performance guarantee

- ▶ very good performance tolerance +0/+5Wp
- ▶ compatible with all common inverters
- ▶ constant production control
- ▶ Processing of high quality components according to German quality standards



AX M-54^{3.2}

premium sol

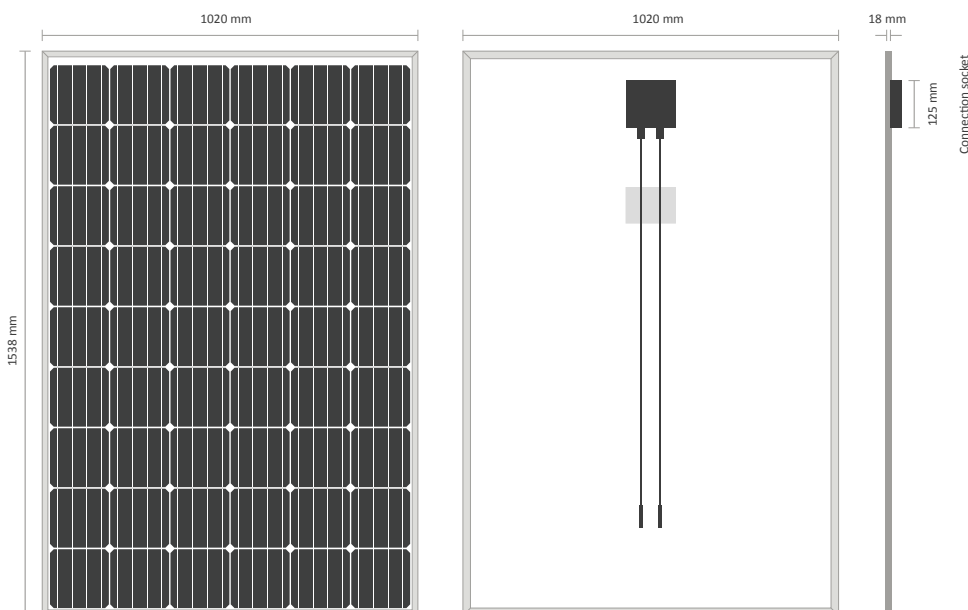
www.axsun.de

Basic data	Sol-Laminate
Dimensions (Length x Width x Height)	1538 x 1020 x 18 mm
Dimensions (Installation) (Length x Width x Height)	1520 x 988 x 18 mm
Weight	15.6 kg
Cells	54 monocrystalline Solarzellen (156x156 mm)
Glass	3.2 mm hardened solar glas
Frame	SOLRIF® frame
Bypass-diodes	3 pieces
Connecting socket	plastic, IP65 type of protection
Cable, Plug	4mm ² solar cable, 1000 mm long, high-quality plug system, KSK4 (MC4)
Max. Voltage	1000 V
Max. return current	15 A
Temperature range	-40°C to 85°C
Max. pressure load	5400 Pascal
Max. dynamic load	2400 Pascal
Application class (acc. to IEC 61730)	A
Fire class (acc. to IEC 61730)	C
Protection class	II

Electrical data under standard test conditions *		AX M-54 250	AX M-54 255	AX M-54 260
Rated power	P_{MPP} [Wattpeak]	250 Wp	255 Wp	260 Wp
Rated voltage	U_{MPP} [Volt]	28.74 V	28.68 V	28.89 V
Rated current	I_{MPP} [Ampere]	8.70 A	8.89 A	9.00 A
No-load voltage	U_{OC} [Volt]	35.34 V	35.28 V	35.53 V
Short-circuit current	I_{SC} [Ampere]	9.30 A	9.50 A	9.62 A
Efficiency	η	15.94 %	16.25 %	16.57 %

Electrical behaviour under NOCT**		AX M-54 250	AX M-54 255	AX M-54 260
Rated power NOCT	P_{NOCT} [Wattpeak]	181 Wp	185 Wp	189 Wp
Rated voltage	U_{MPP} [Volt]	25.71 V	25.66 V	25.85 V
Rated current	I_{MPP} [Ampere]	7.04 A	7.19 A	7.28 A
No-load voltage	U_{OC} [Volt]	32.13 V	32.07 V	32.30 V
Short-circuit current	I_{SC} [Ampere]	7.53 A	7.69 A	7.79 A

Temperature coefficient (in case of temperature change)		
Power	P_{MPP} [Wattpeak]	$Tk P_{MPP} = -0.42 \% / K$
Voltage	U_{OC} [Volt]	$Tk U_{OC} = -0.32 \% / K$
Current	I_{SC} [Ampere]	$Tk I_{SC} = 0.043 \% / K$



take way
for an easy way



Sales partner AxSun Solar

100%
MADE IN
GERMANY